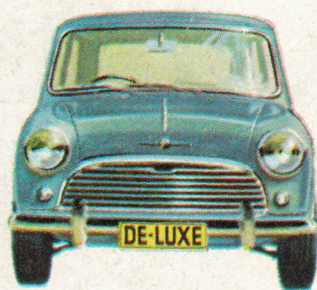




## the most thick skinned cars in the world

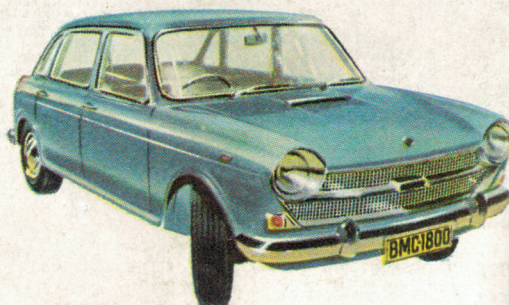
A BMC car, and BMC alone, gives you the investment and safety protection of Rotodip 7 skin deep rust protection. Rotodip is unique because car bodies actually **rotate** through special cleaning and rustproofing solutions. Result: no air pockets can form; every inch of the body, inside and out is treated. Rust (it starts on the inside) can't form, can't weaken the inherent body strength of your car. Rotodip rust protection is one reason why your BMC car is safer. Others: BMC's better front wheel handling, better braking, unique stay-on-line Hydrolastic\* fluid suspension. You buy a safe car, an advanced car when you buy BMC. There's one to suit your needs exactly!



**Morris Mini De Luxe.** The car that started the move to advanced motoring. (\$1,689, £844/10/0)



**Morris 1100.** For the family that is going places. (\$1,999, £999/10/0)



**Austin 1800.** The car that has been called the car of the century, (\$2,365, £1182/10/0)

BMC—Manufacturers in Australia of BMC Morris Mini, BMC Morris Mini De Luxe, BMC Morris Cooper 'S', BMC Morris 1100, BMC Austin 1800, BMC Wolseley Mk. II, BMC Austin Healey Sprite, BMC MGB, BMC Morris Light Commercials and BMC Austin Heavy Trucks.

\*Reg. Td. Mk.

